

# Exchange of experiences

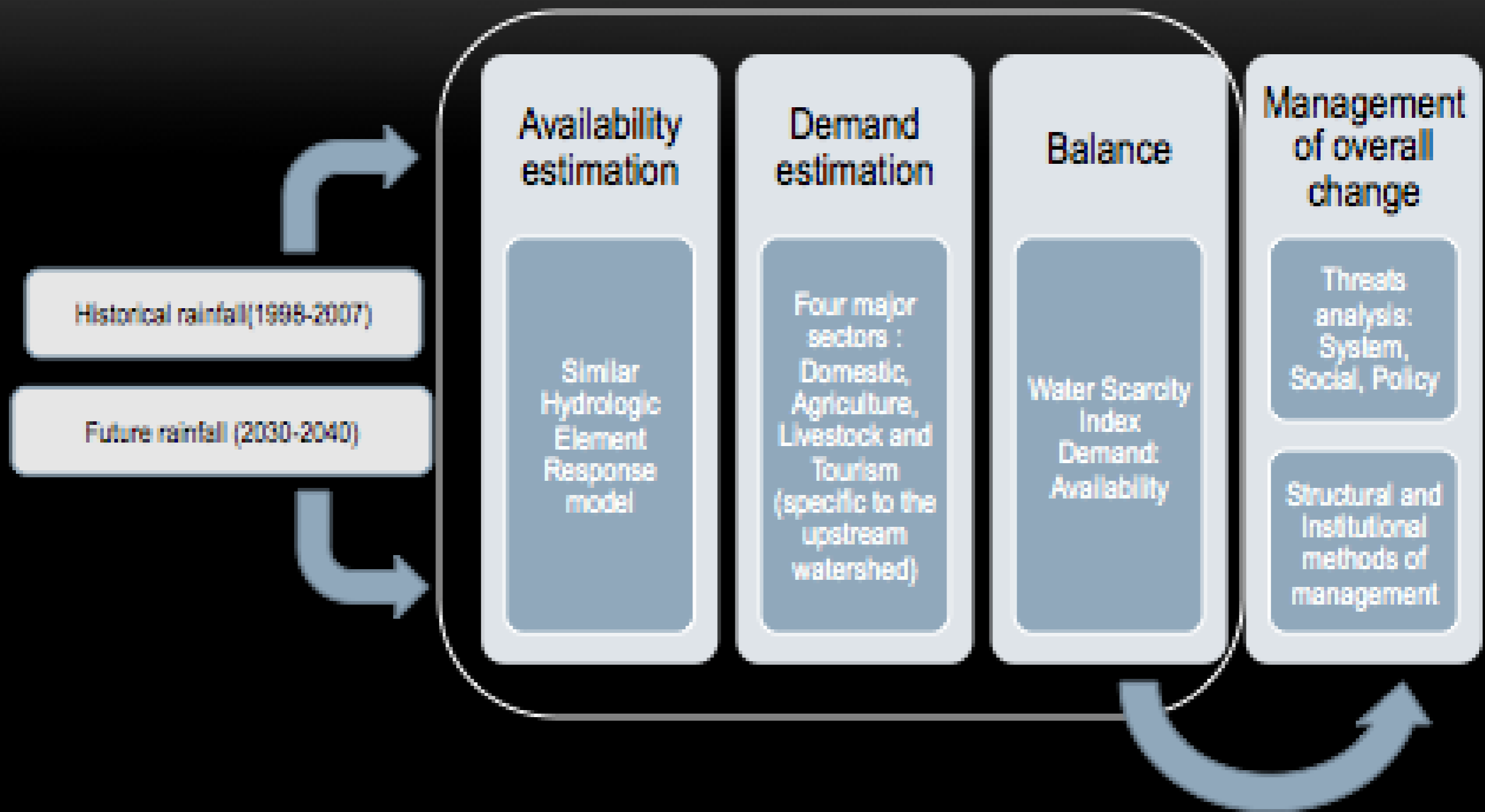


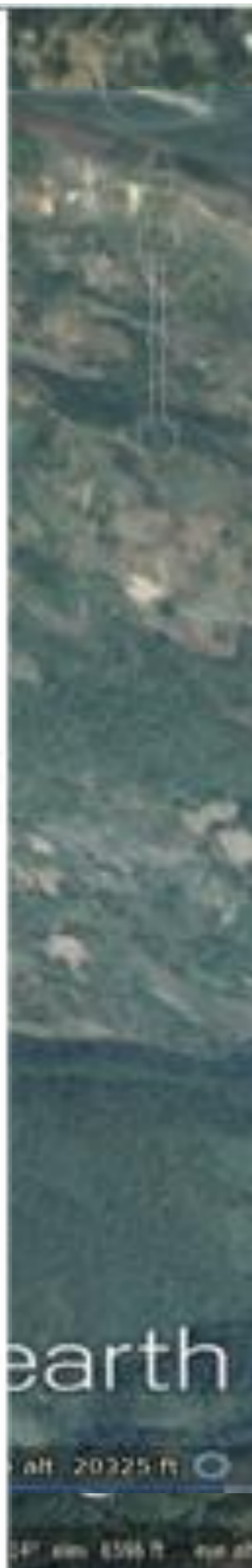
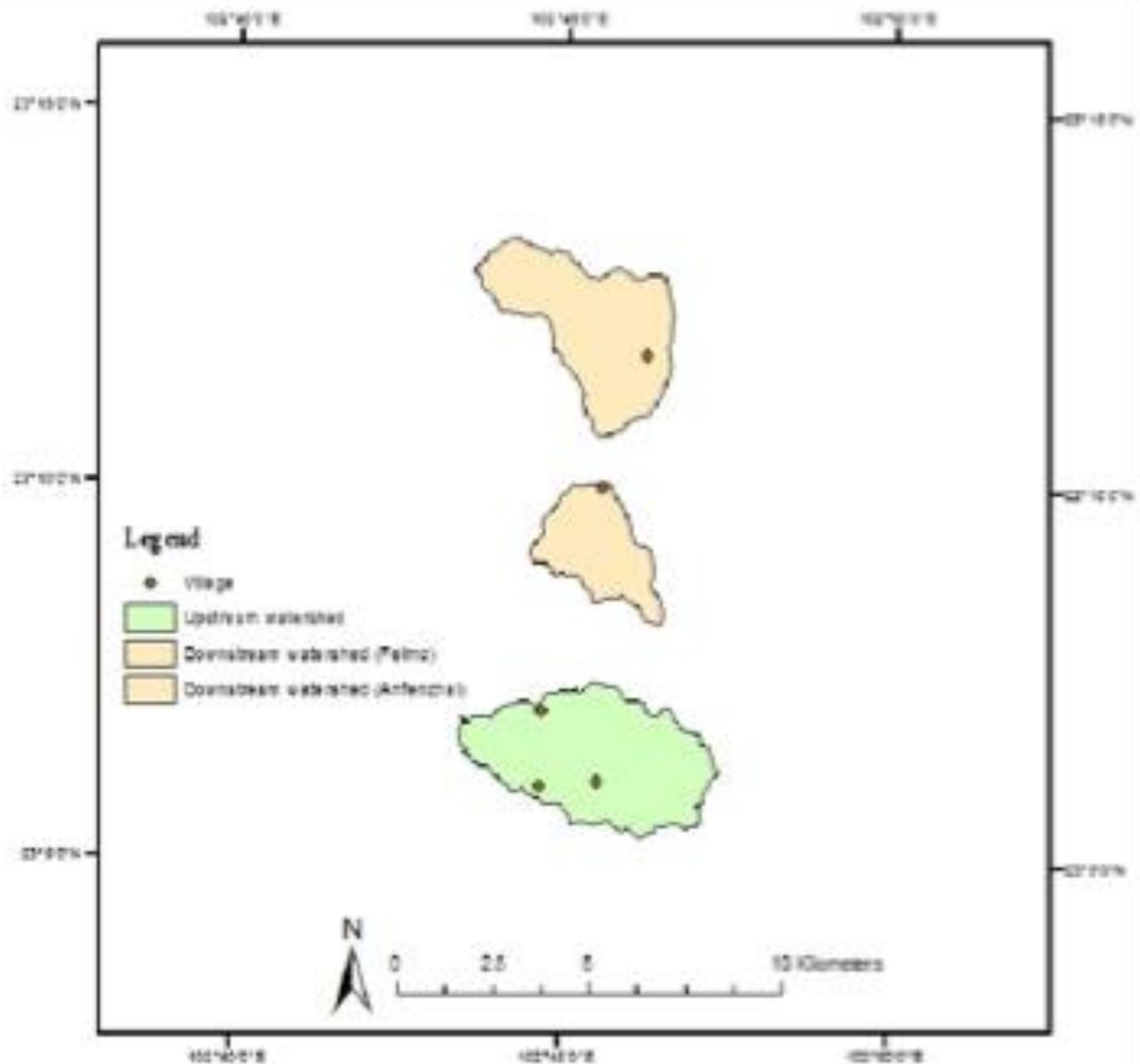
# Sustainability

# Honghe Hani Rice Terraces









# CONCEPTUAL DIAGRAM OF WATER SYSTEM

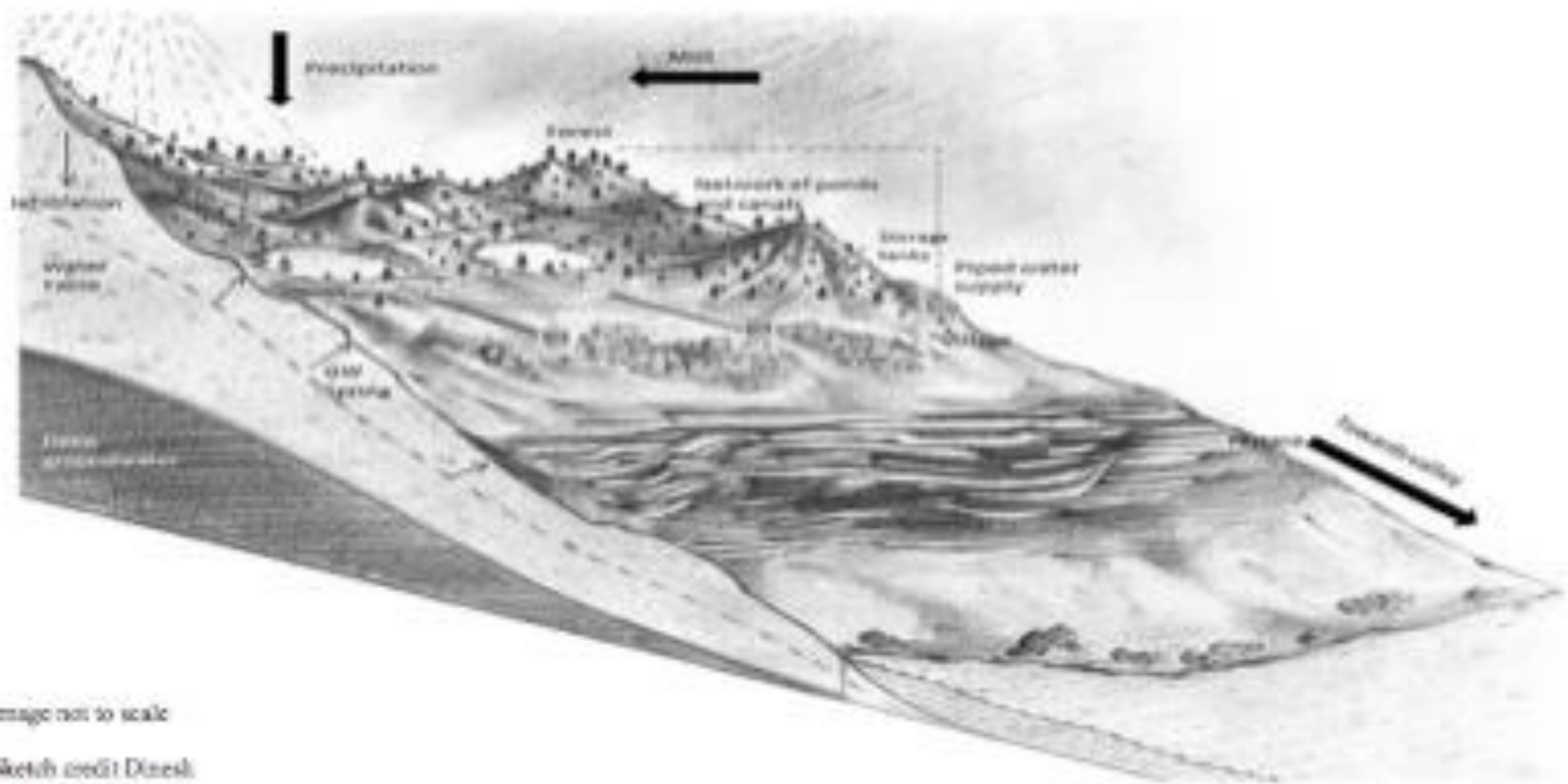


Image not to scale

Sketch credit Dinesh

<b>Historical Estimates</b>	Feb-Apr: instances of moderate scarcity seen in the upstream areas. Coordinated storage regime effective Downstream: Clear pattern in Rws values. Feb-Mar instances of moderate scarcity External effects have not been considered
<b>Future Estimates</b>	Total Volume of water available increases, Higher peaks of Rws, more pronounced dry and wet seasons. The increase in the Rws values is more dramatic in the downstream areas, during Feb-March and October-November

## Difference in Perception of shortage

*“there is a shortage of water with the development of tourism in the area, as they utilize a lot of water” “planting trees and building tanks to store water” could be a way out.*

*-Upstream farmer*

## Traditional systems of water allocation

Difference in methods of management in both the reaches

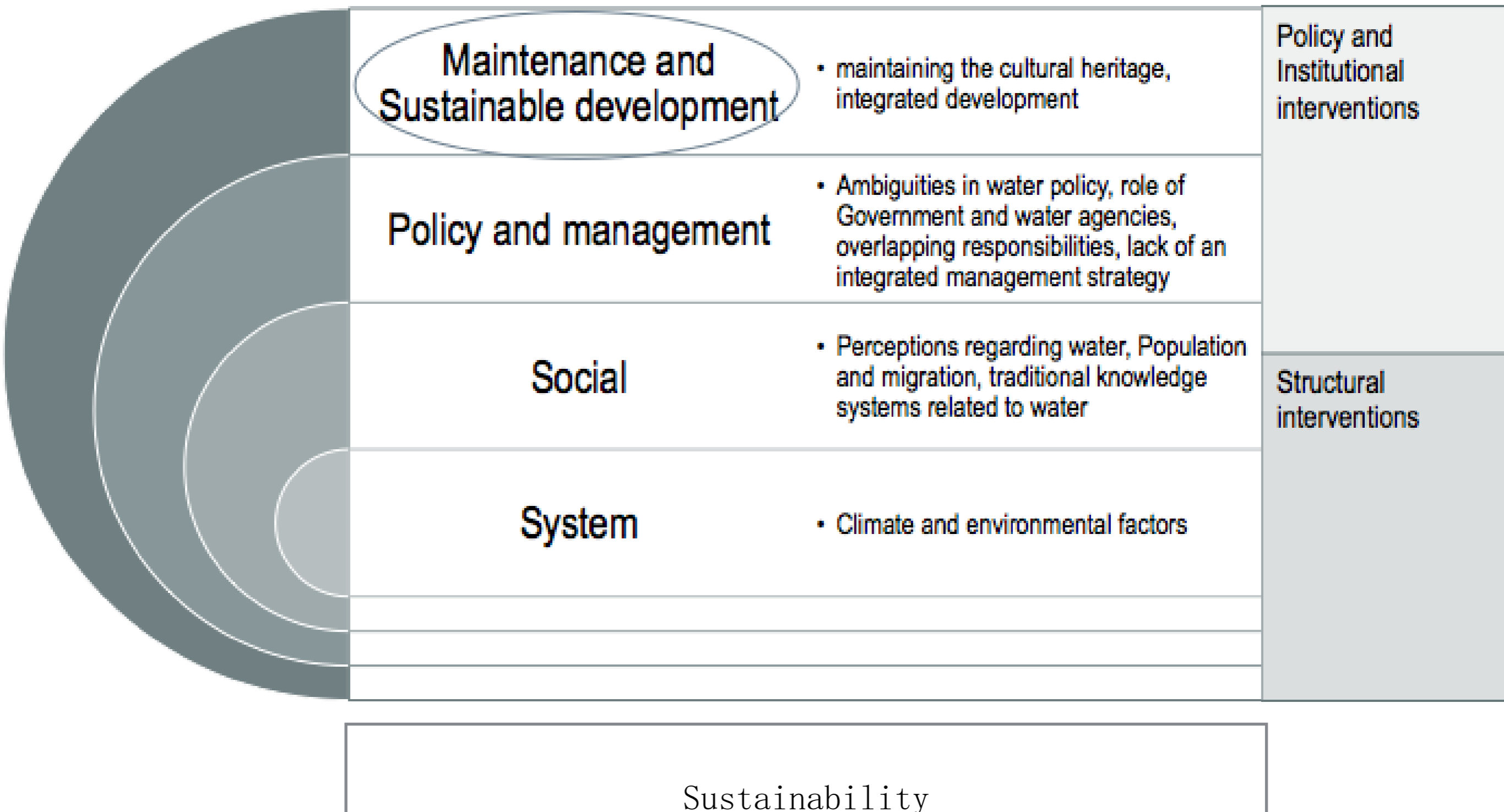
Role of water agencies and the Government

*“The government gave us access to a spring, located about 6Km away from the village, water from which was diverted into a big tank with a capacity of 170m<sup>3</sup>. The tank serves as the water source for the village. This came at a price of 51600 CNY. Additionally we pay fees for management of the system”.*

*-Village leader (Feimo)*

# Consolidated threats and remedial measures

Archana J. Sustainability of Hani Rice Terraces. HST Seminar, Beijing 2016





谢谢 धन्यवाद



ありがとうございます

Thank You நன்றி

