

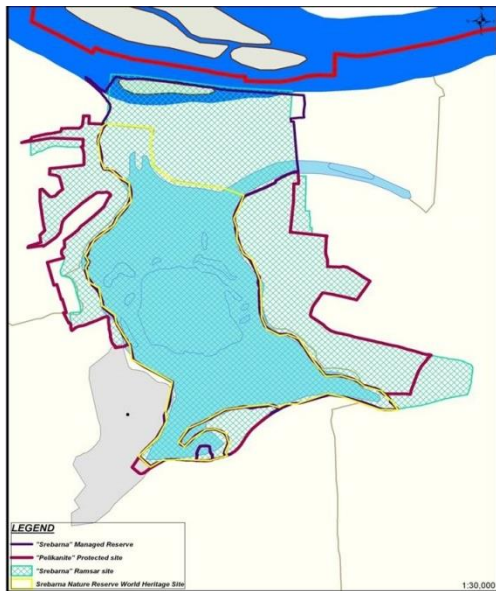
## **“Srebarna” Nature Reserve**



**Ministry of Environment and Water of the Republic of Bulgaria**

**Regional Inspectorate of Environment and Water – Ruse**

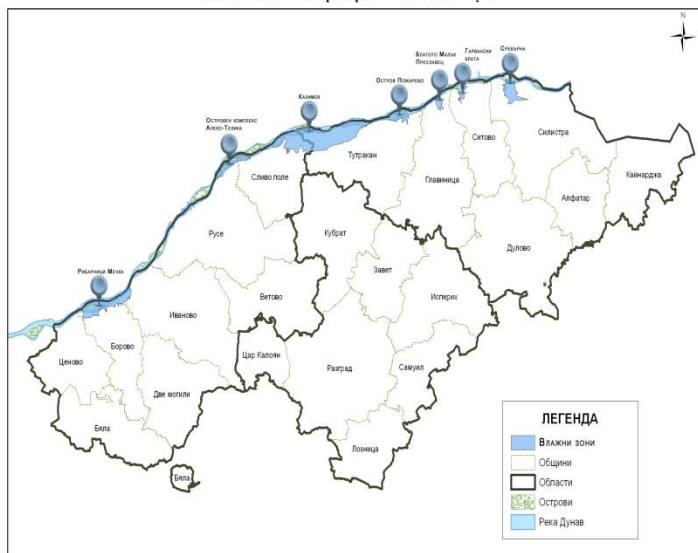
*Beijing, 2017*



## Where is the site situated?

- "Srebarna" lake is situated 18 km west of the town of Silistra
- At the bank of Danube river, between km 393 и 391
- Water surface is 1,8 km<sup>2</sup>

Влажните зони на територията на РИОСВ-Русе



## Specifics

- Situated in the Danube river floodplain
- Fluctuating water level dependent on the Danube level
- Main water supply from the Danube river and supporting supply from surface and underground sources
- Floating reed islands



## Differences in comparison with other Danube wetlands?

- Seismic origin
- Eutrophic lake
- Presence of floating reed islands
- Fluctuating water level





United Nations  
Educational, Scientific and  
Cultural Organization



World Heritage Convention

## Legal Status of “Srebarna”

*According to National  
Legislation:*

- Managed Reserve according to Protected Areas Act
- Two protected areas of the “Natura 2000” network, according to Biodiversity Act
- “Pelikanite” protected area – a buffer zone

*International Agreements*

- Ramsar Convention Site
- Important Bird Site
- World Heritage Site
- Biosphere Reserve



## Biodiversity

- 214 bird species
- 41 mammals
- 216 other animal species
- 1430 plant species



# Avifauna – nesting and migrating bird species

## Nesting birds in Srebarna:

- Dalmatian pelican, a mixed heron colony
- Pygmy cormorant
- Mute swan (*Cygnus olor*), Greylag goose (*Anser anser*), Ferruginous duck (*Tadorna rufficollis*), Whiskered tern (*Chlidonias hybrida*)

## Migrating birds species in Srebarna:

- Greater white-fronted goose (*Anser albifrons*),
- Red-breasted goose (*Branta rufficollis*),
- Corncrake (*Crex crex*), etc.



## Tourist Opportunities of the Region

- Visitor infrastructure
- Road Infrastructure
- Ferry line Romania – Bulgaria



### ЛЕГЕНДА

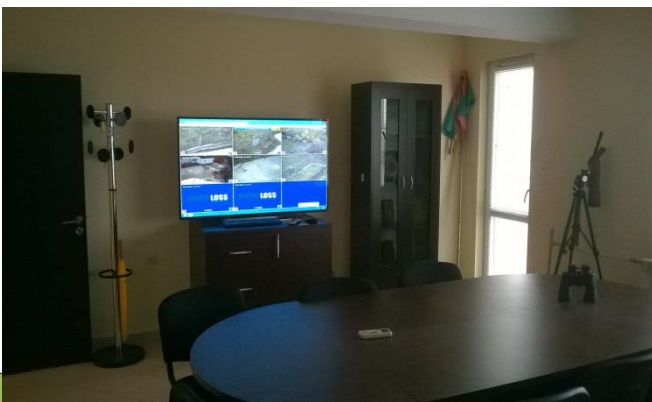
1. Природонаучен музей - с. Сребърна - Защитена местност "Пеликаните" - Рибарско селище "Атанасово"
2. Участък за спортен риболов
3. "Фазанария" - "Южен шлюз"





## Tourist Resources

- Natural Science Museum – A Visitor Centre
- Visitor Routes
- Optical and Surveillance Equipment
- Disable persons accessible
- Other places of interest in the town of Silistra



## Completed projects in “Srebarna”

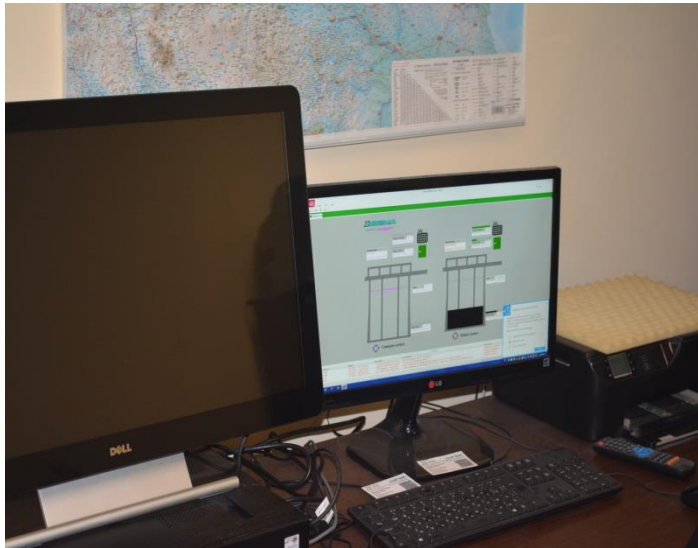
Project No 58301-19-439  
“Limitation of negative impact of  
invasive species and restoration  
of natural habitats by  
afforestation of local tree species  
in “Srebarna” Managed Reserve”

Project “Activities on  
sustainable management of  
“Srebarna” Managed Reserve and  
“Beli Lom” Reserve”, financed  
by the Operational Program  
“Environment 2007 – 2013”



## Site Issues

- Anthropogenetic impact
- Intensive agriculture
- Erosion
- Consequences for ecosystems



## Water Circulation Particularities

- A water supply canal and locks
- A partially disconnected dike
- An automatic water level detection system
- Low Danube river water levels



## Invasive Species

- Plant species:  
False indigo-bush (*Amorpha fruticosa*), Manitoba maple (*Acer negundo*), White ash (*Fraxinus americana*)
- Animal species: Black bullhead (*Ameiurus melas*), Chinese sleeper (*Perccottus glenii*)



## Climate change

- Changes of birds' migratory routes
- Changes in number of wintering birds
- Changes in breeding seasons of animal species



## Protection of the site

- Activity overseers
- Video surveillance system
- A thermal surveillance camera





## Local Communities' Attitude

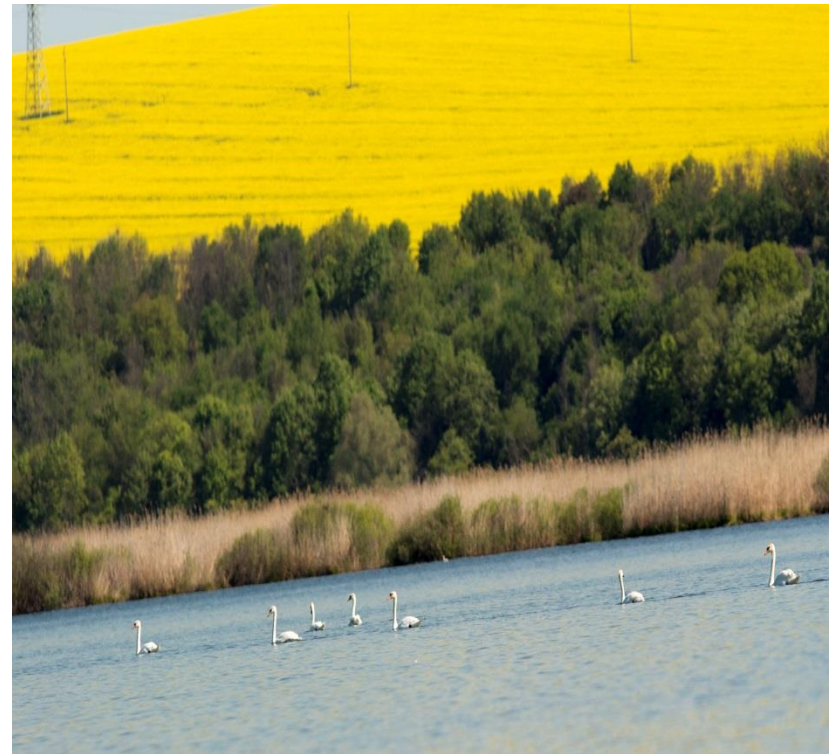
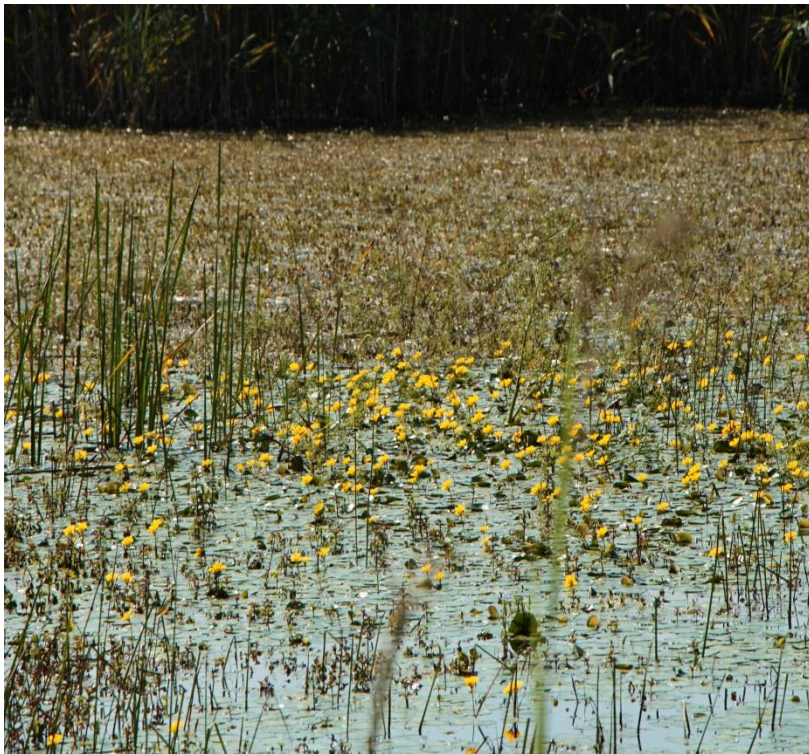




# Welcome to “Srebarna”



# Welcome to “Srebarna”



# Welcome to “Srebarna”





**Thank you for your attention!**

**Momchil Petrov**

РИОСВ – Руже

Regional Inspectorate of Environment and  
Water – Ruse

7000 Ruse, Bulgaria

20 “Pridunavski Boulevard”

Tel: +359 82 820 772;

Fax: +359 82 820 779

E- mail: [riosv@riosv-ruse.org](mailto:riosv@riosv-ruse.org)

Web: [www.riosv-ruse.org](http://www.riosv-ruse.org),

[www.srebarnalake.com](http://www.srebarnalake.com)