

World Heritage Issues in Sindh (Pakistan)

PRESENTED BY

Manzoor Ahmed Kanasro
Director General of
Archaeology & Antiquities Sindh - Pakistan





Islamic Republic of Pakistan



Archaeological Ruins of Mohenjo-Daro (Sindh)



Archaeological Ruins of Taxila (Punjab province)



Archaeological Ruins of Takht-i-Bahi (KPK)



Monuments of Makli Hill (Sindh province)



Lahore Fort (Punjab province)



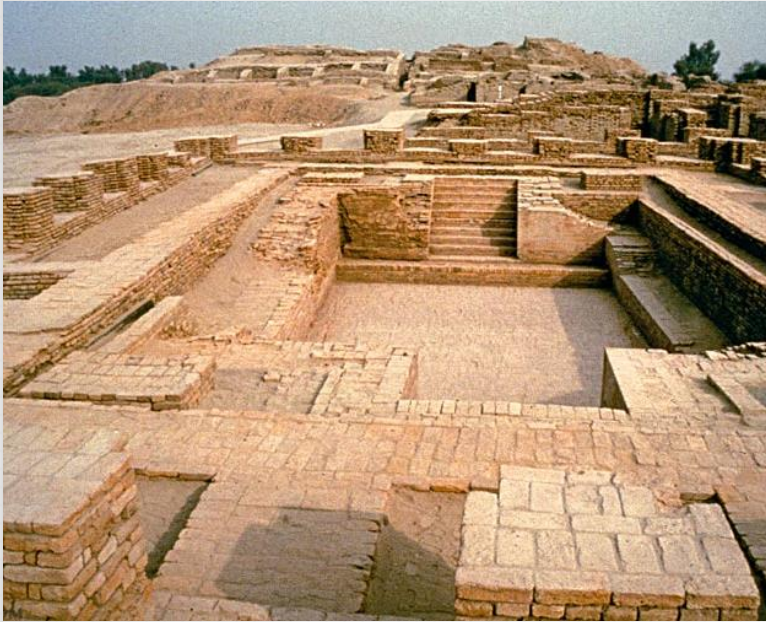
Shalamar Gardens (Punjab province)



Rohtas Fort (Punjab province)



World Heritage sites in SINDH province



Archaeological ruins of Mohenjo-Daro

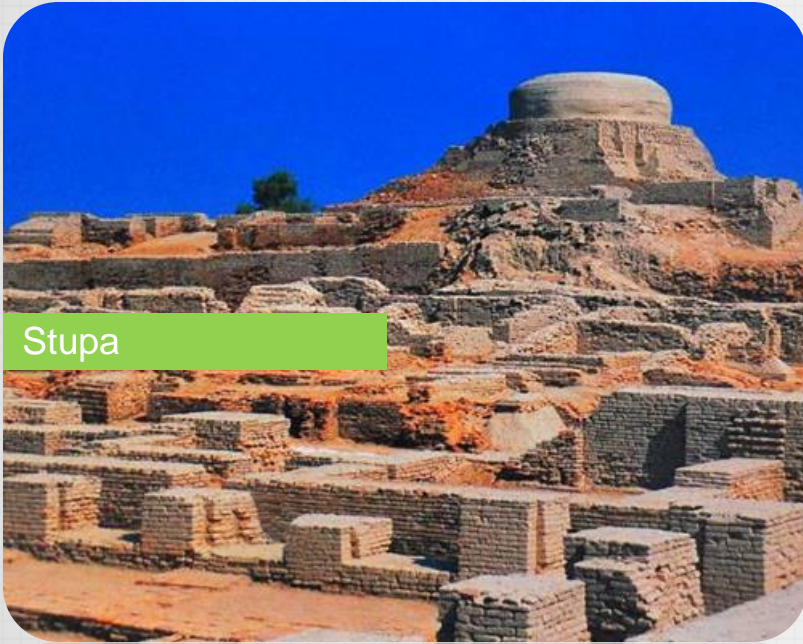


Monuments of Makli Hill

This is lower city of Mohenjo-Daro



This is Stupa and Great bath



Stupa

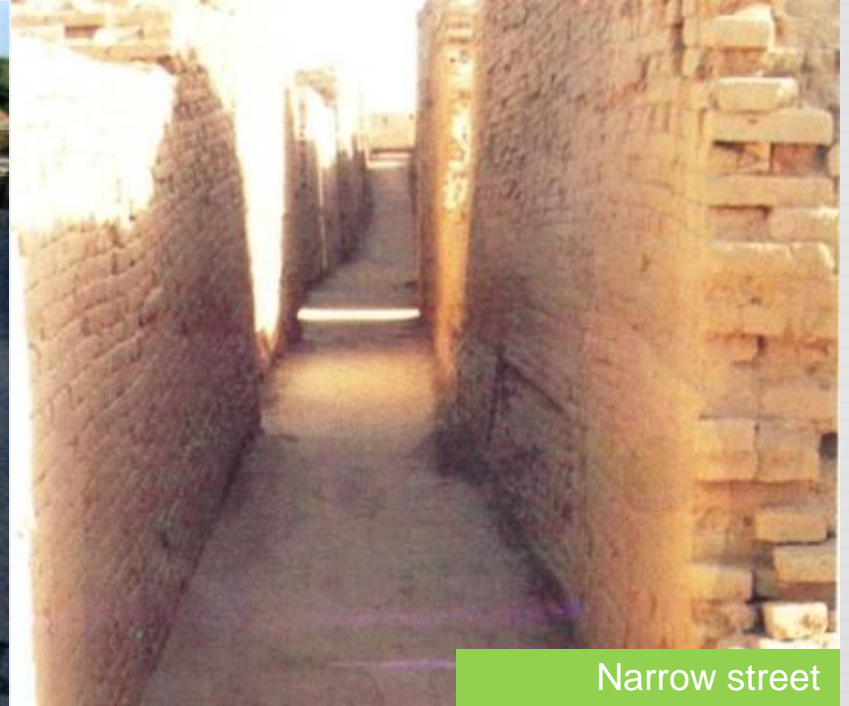


Great bath

Look here the Wide and Narrow streets



Wide street

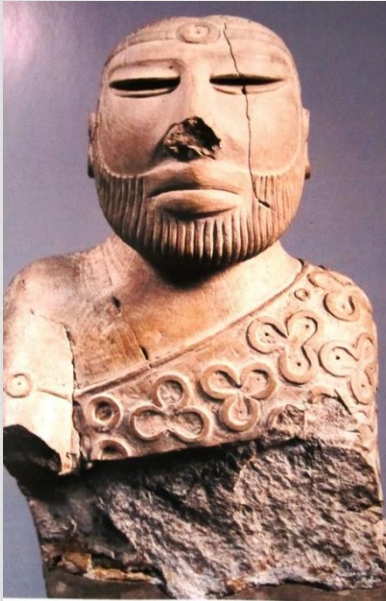


Narrow street

Here are 2 different looks of wells



Some objects found from there...



King priest



Dancing girl



Neckless



Female figurine

And finally some seals & inscription..





And now we are going to Makli Hill
monuments... Thatta Sindh

This is the marvellous **Essa Khan tomb**



The tomb of Jam Nizamuddin

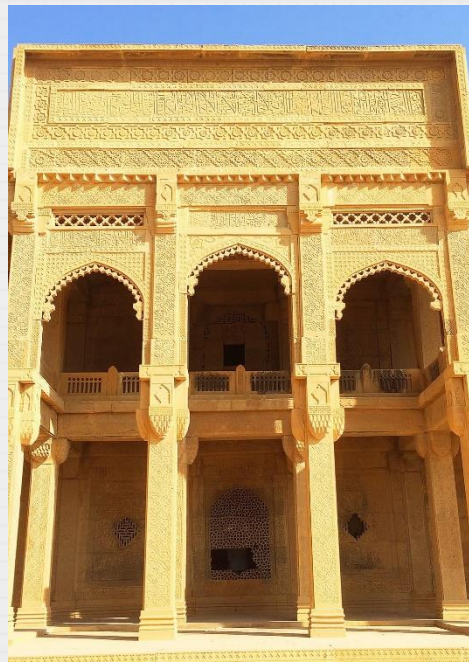


Few views of carved stones on monuments

Jam Nizamuddin tomb



Essa Khan Tarkhan



A grave

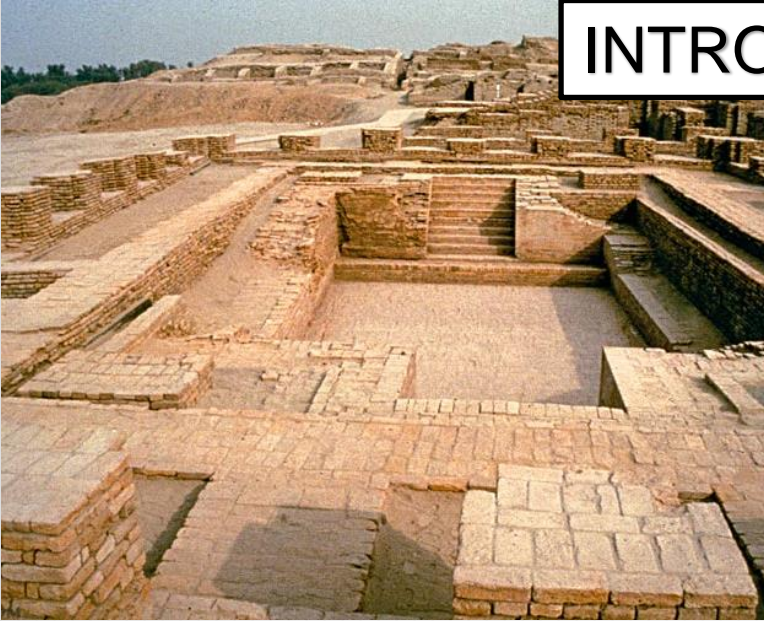


Beautiful tomb of Dewan Shurfa Khan



World Heritage sites in SINDH province

INTRODUCTION



Archaeological ruins of Mohenjo-Daro



Monuments of Makli Hill

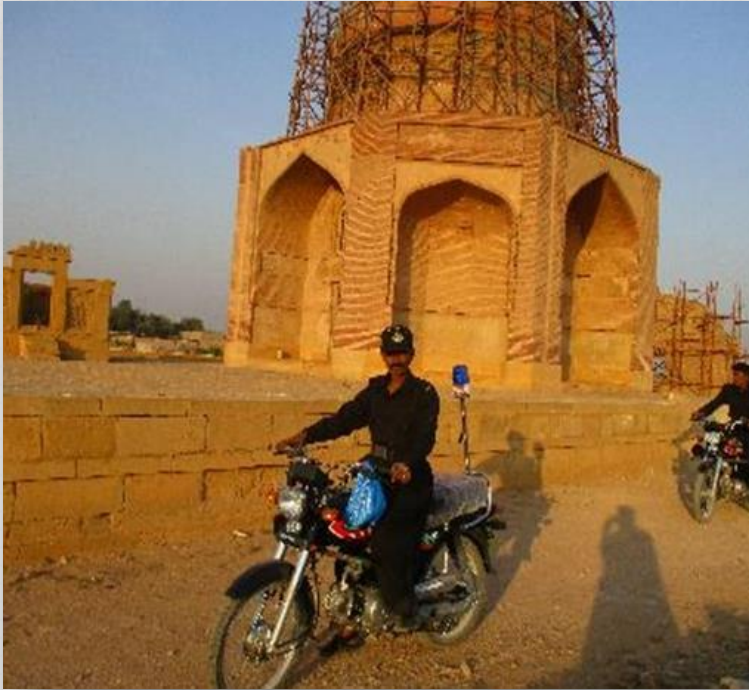
Encroachment removed



Trash bins fixed at Makli Monuments



Patrolling of Security Guards



Boundary wall Constructed



Installation of Weather Stations



Installation of Crack Monitor Units



Removal of Vegetation at site



Before



After

Conservation work **view**



Before



After

Conservation work view



Before



After

THANK YOU ALL FRIENDS

